

# GROWING PAINS – THE WESTERN WATER STORY:

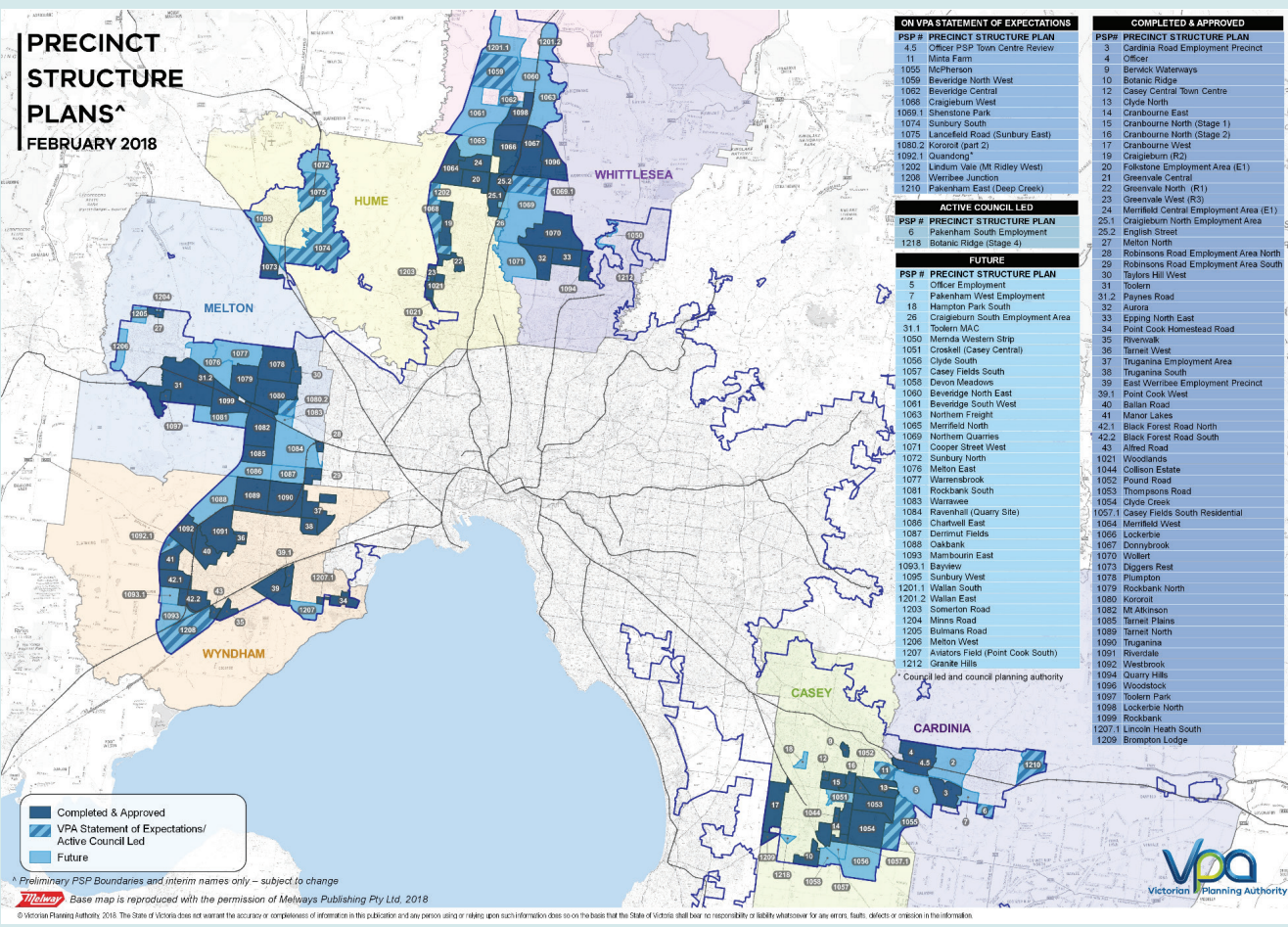
## Planning a resilient water supply in an environment of unprecedented growth and climate change



Tim Hatt (Water Resources Advisor – Western Water) | Heath Miles (Master Planning Co-ordinator – Western Water) | Dan Stevens (Business Director Water – Beca)

### Rising to the challenge

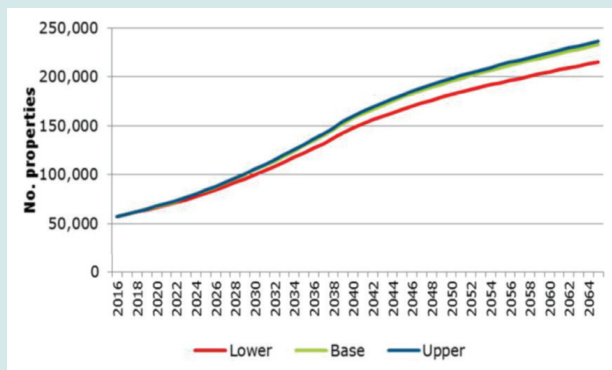
#### — Western Water Service Area —



#### — Impacts of climate change —



#### Sustained growth



Western Water services one of the fastest growing regions in Australia.

Less than twenty years ago, Western Water supplied a number of outer suburban and small towns through a combination of conventional surface and groundwater sources.

Today, Western Water provides water, recycled water and sewerage services:

- 65,776 properties
- a population of 153,358
- an area of 3,000 km<sup>2</sup>

Over the next 50 years, the population in the Western Water region is likely to increase significantly, and by 2067 the number of residential lots serviced is forecast to almost quadruple.

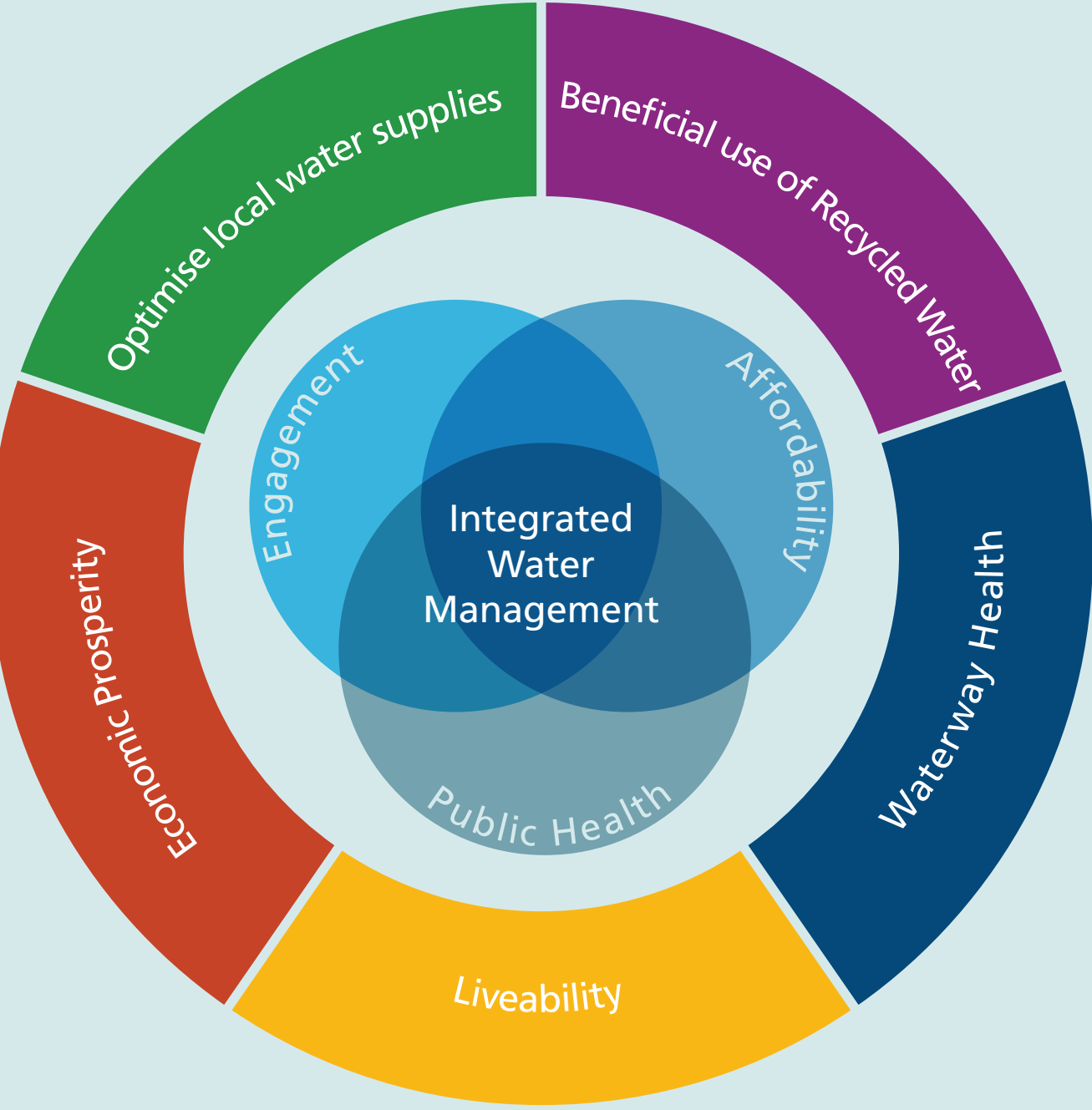
Impacts of climate change were evident during the millennium drought and subsequent floods in 2010/11.

The drought placed a significant strain on supplies, requiring:

- bulk supply from Melbourne Water
- development of recycled water plants and a non-potable transfer network
- investment in a more inter-connected potable water transfer network.

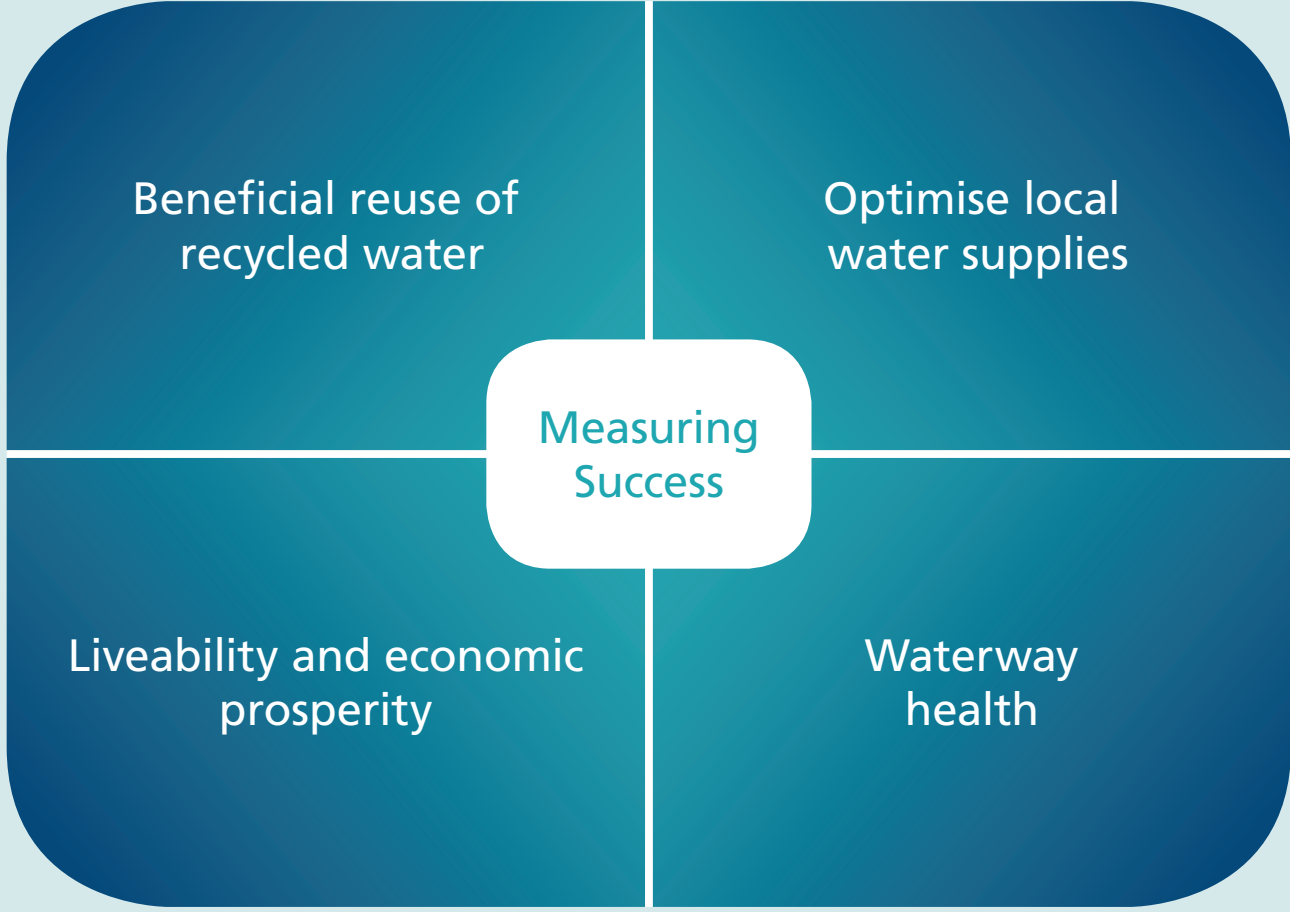
### Integrated response; setting clear vision, putting strategy in place and planning effectively

#### Integrated Water Management Strategy



- Pragmatic and evidence based approach
- Recycled water supports sustainable communities
- Collaboration and engagement are key to success.

#### Measuring success



#### Western Water Workstreams

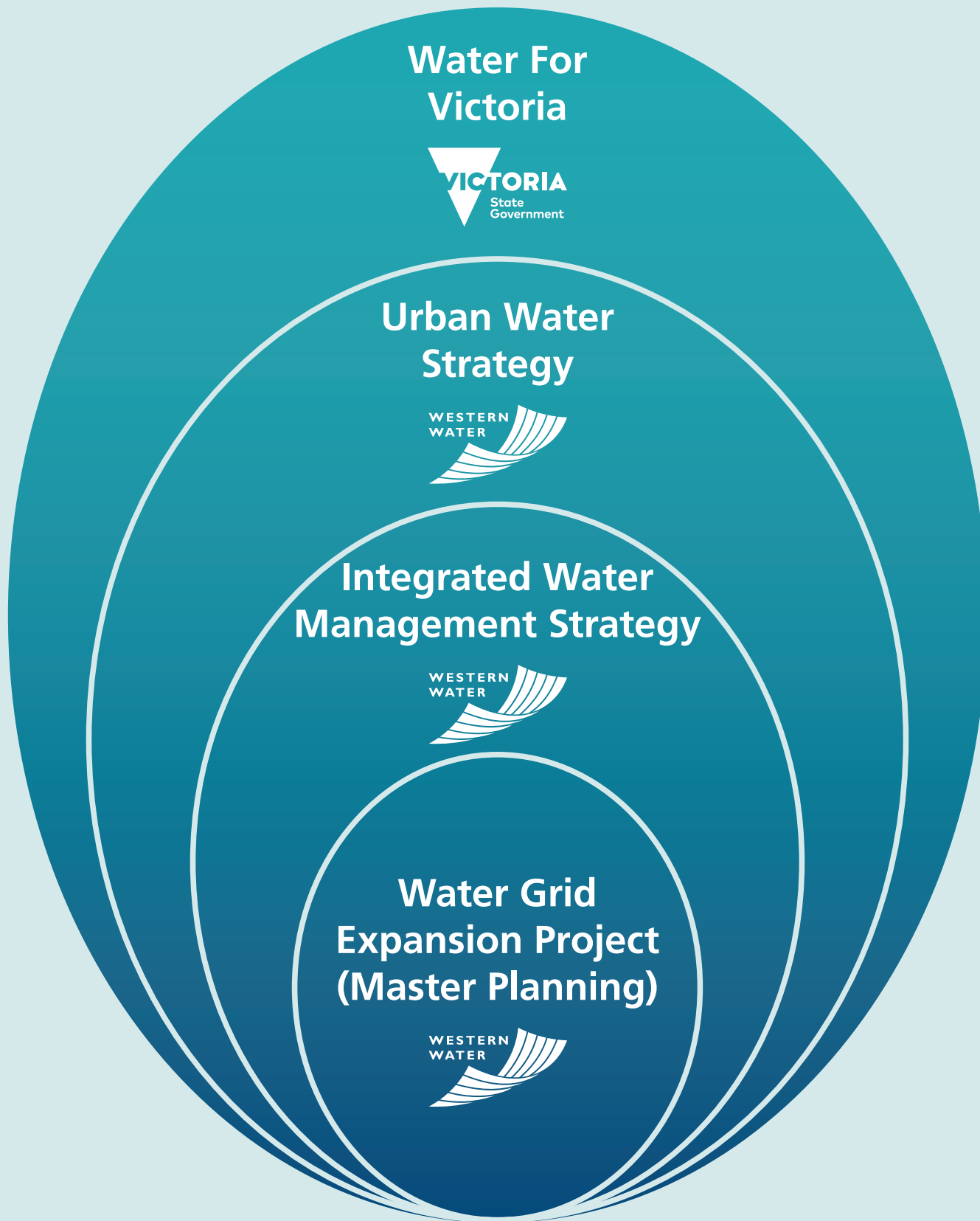
Western Water have responded with a number of targeted activities, including three complementary workstreams;

- Urban Water Strategy
- Integrated Water Management Strategy
- Water Grid Expansion Project.

#### Water Grid Expansion Project

- Water Acquisition Study
- E-Flows Study
- Sub-Regional Water Master Plans
- Transfer Network Master Plan.

#### An Integrated Response – Connectivity



#### Urban Water Strategy



**“**  
*Water is fundamental to our communities. We will manage water to support a healthy environment, a prosperous economy and thriving communities, now and into the future.*  
**”**

- Key themes:
- Stakeholder and community engagement
  - Optimise alternative water use
  - Water use efficiency
  - Safe and resilient water supply.

**Find out more**  
**Western Water** [www.westernwater.com.au](http://www.westernwater.com.au)  
**Beca** [www.beca.com](http://www.beca.com)

